

# Conference Registration

2023 ANNUAL CONFERENCE

  
**RISE**  
**ABOVE**

MICHIGAN  
Home Care  
& Hospice  
ASSOCIATION



**MAY 3–5, 2023**

**GRAND TRAVERSE RESORT AND SPA**

**ACME, MICHIGAN**

# CONFERENCE INFORMATION

## Who should attend?

Home Care, Hospice, Palliative & HME Staff, Administrators & Managers, Owners, Physical, Occupational & Speech Therapists, Social Workers, Clinical Nurse Supervisors, Finance, Reimbursement & Billing Staff, Volunteer Managers and Human Resources Personnel. You!

## Registration:

Mail completed registration form with payment to MHHA, 2140 University Park Drive, Suite 220, Okemos, Michigan 48864. Make checks payable to MHHA. No telephone registrations will be accepted. Fax registrations will be accepted ONLY for payment by credit card. Confirmations are guaranteed to be sent to those whose registrations are postmarked by Friday, April 28, 2023. Early bird registration discount rates apply to registrations postmarked by Friday, March 31, 2023. Agencies will be billed for the difference if early-bird fees are postmarked after Friday, March 31, 2023. **Registration sharing is strictly prohibited. Each person must be registered.**

## Cancellation Policy:

Registration fees, less a \$50.00 processing charge are refundable by submitting your request in writing to MHHA (fax: 517/349-8090) on or before Friday, March 31, 2023. No refunds will be made, under any circumstances, after March 31st. Substitutions are permitted by faxing your request to MHHA, 517/349-8090.

## Nursing Contact Hours:

Michigan HomeCare & Hospice Association is approved as a provider of nursing continuing professional development by Pennsylvania State Nurses Association, an accredited approver by the American Nurses Credentialing Center's Commission on Accreditation.

## Relevant Financial Resolution:

No one with the ability to control the content of activities has any Relevant Financial Relationships with an ineligible company.

## Criteria for Successful Completion:

In order to receive contact hours you must stay for the entire session and complete an evaluation for each session. Each attendee will be supplied with barcode labels to use for signing in and out of the session. At the conclusion of each session, you must complete the evaluation.

**Social Work CEs:** Applied for to the Michigan SW CE Collaborative.

**Nurse Home Administrators CEs:** Applied for to the Michigan Department of Licensing & Regulatory Affairs

## Dress:

For your comfort, please dress casually for the conference.

## Overnight Room Reservations:

Book your tower guest room reservation on-line today at <https://book.rguest.com/onecart/wbe/calendar/759/Grand-Traversal-Resort/MHHA23>. Click on the BOOK HERE and enter group code of MHHA23 OR call the resort directly at 1/800-236-1577 and mention Michigan HomeCare & Hospice Association and the group code: MHHA23. Tower Guestroom rates are \$189.00. Rates do not include 6% state tax, 5% city tax and \$18.95 resort fee.

## Consent to Use Photographic Images:

Registration and attendance at, or participation in, MHHA meetings and other activities constitutes an agreement by the registrant to the use & distribution of the registrant/attendees' image photographs of such events and activities by MHHA.

## Meeting Rooms:

Individual response to temperature differs greatly. It is best to layer clothes, dress for a warm room, but bring a sweater/jacket.

## Registration:

Register for this in person event. Complete the attached registration form. Many great sessions that allow for agencies to send more than one person from your agency. Additional attendee discount. Reward employees with over 30 hours of CEs for professional development and networking opportunities to learn from others in the industry. Current CDC Recommendations/Guidelines will be followed to help keep attendees safe and healthy.

## At Your Service:

**Host:** MHHA, 2140 University Park Drive, Suite 220, Okemos, Michigan 48864, Phone: 517/349-8089, Fax: 517/349-8090. E-mail: [cindy@mhha.org](mailto:cindy@mhha.org)

**Conference Hotel:** Grand Traverse Resort & Spa  
100 Grand Traverse Blvd., Acme, MI 49610-0404  
Phone: 231/534-6000 Fax: 231/543-6152

## Silent Auction:

Plan to attend and participate in the Silent Auction that benefits the Michigan Foundation for Home Care Scholarships. The Annual Silent Auction will be set up in the Exhibit Hall starting on May 3, 2023 from 4:30 p.m. to 7:00 p.m. and will remain open throughout the conference during scheduled exhibit times. The bids will close at 12:00 noon on Thursday, May 4, 2023. Proceeds will help support the Michigan Foundation for Home Care Education scholarships and programming. If you are interested in donating something of value to the auction, please complete the enclosed donation form.



## A Message from our President & CEO

The Michigan Home Care and Hospice Association (MHHA) announces the opening of registration for our 2023, Annual Education Conference, Exposition and Annual Meeting. This year's Event takes place May 3 – 5, offering two and a half days of to learn and engage with distinguished speakers, product experts, and network with colleagues.

The theme for the Conference is **"RISE ABOVE"** a fitting recognition of the challenges our industry and each of you overcame in your personal lives and professional careers to navigate the challenges of the past three years. The MHHA conference presents an opportunity to meet new friends and reacquaint with peers. What better place to rise above, than at the spacious and beautiful Grand Traverse Resort & Spa?

This year marks MHHA's 42<sup>nd</sup> anniversary and return to the largest gathering of home care and hospice in Michigan. You can expect to learn about the latest research, development, regulations, laws, and news. The Conference provides carefully planned education content with inspirational keynoters, knowledgeable experts, and unique learning experiences, and FUN. Vendor are anxious to showcase new and helpful products, services, and to share friendly conversation and knowledge. Attending the Conference could be the best investment you make this year for your organization and your professional development.

The future for home care and hospice continues to grow and the trend is not expected to slow for a few more decades. The Conference helps bring together collaboration to share data, knowledge, and insight, to navigate a clear vision to strategically rise above challenges and plan your career, and business success. As an industry, we work collectively to promote best practices that help citizens chose to stay in their homes for as long as our home care services will support them to do so safely. The MHHA Annual Conference will help you focus clearly on your vision for a prosperous and rewarding future as a home care and hospice professional.

**Register soon to get the lowest rates** for the 2023 MHHA Annual Conference & Expo.

Barry Cargill, CAE

A handwritten signature in black ink that reads "Barry Cargill". The signature is written in a cursive, flowing style.

MHHA, President & CEO

# CONFERENCE SPEAKERS



## Jeffrey S. Baird, Esq.

Jeffrey S. Baird, Esq., is Chairman of the Health Care Group at Brown & Fortunato, P.C., a law firm based in Amarillo, Texas. Mr. Baird represents pharmacies, HME companies and other health care providers throughout the United States. He works closely with governmental agencies. Mr. Baird has authored numerous articles and is a frequent lecturer throughout the country. He serves on the Medtrade Education Advisory Board, the AAHomecare Regulatory Council and the AA-Homecare Payer Relations Council. Mr. Baird earned a B.B.A. from the University of Iowa and received his law degree from the University of Tulsa College of Law. Mr. Baird is Board Certified in Health Law by the Texas Board of Legal Specialization.



## Erin Beauprez, MPA, SHRM-PMQ, CFMILS, CAVS, CVA

Erin Beauprez is a Colorado-native who relocated with her family to Kalamazoo eight years ago and loves it! After earning a Master of Public Administration degree from the University of Colorado, Erin dedicated her career to nonprofit organizations providing mission-driven services in many settings, including hospitals, hospice, public schools, human services, and museums. Erin is SHRM-PMQ certified, is a Certified Family Medical Leave Specialist, and maintains both the CAVS and CVA certifications in volunteer engagement. As Director of Volunteer Engagement, she led groups of volunteers ranging from 20 volunteers to 16,000 volunteers across four states. As the CHRO and Director of Human Resources for nonprofits of varying sizes, Erin enjoys all aspects of human resources including employee engagement and DEI, and she recently completed the full training through ERACCE. Also, Erin is passionate about teaching abuse prevention to parents, teachers, and caregivers. Erin enjoys baking, skiing, and volunteering, especially with her family. Her recently adopted one-eyed tabby cat, Ginger, who keeps her laughing.



## Don Beisert

Don Beisert is the Interoperability Product Manager at Homecare Homebase. Don has worked in product management in health care for over 18 years focusing on interoperability. Over the past 2 years, he has been focusing on EVV.



## Jennifer Belden

Jennifer Belden is the Director for the Bureau of Survey and Certification, in the department of Licensing and Regulatory Affairs. In her role, she oversees the federal survey and certification process for both long-term care as well as acute and continuing care facilities in the state of Michigan. Jennifer brings over a decade of healthcare experience in acute and continuing care and is passionate about leveraging respectful and empathic dialogue to achieve mutual purpose. She holds a BA in Organizational Management from Spring Arbor University as well as a Master of Science degree from Trine University with a specialization in Healthcare Administration. Additionally, Jennifer has received extensive communication training including several certificates in conflict resolution, restorative justice practices, as well as a board certification as a Patient Experience Professional (CPXP), Bridges to Healthcare certified trainer, and Lean Six Sigma Greenbelt.



## Thomas Boike, MD, MBA

Dr. Thomas P. Boike served as chief resident at the University of Texas Southwestern in Dallas, Texas. He has had academic appointments at the University of Texas Southwestern where he was an Assistant Professor and more recently at Wayne State University as Adjunct Assistant Professor. Before joining the MHP Radiation Oncology Institute, Dr. Boike served as the Network Medical Director for the Karmanos Cancer Institute across the state of Michigan, overseeing oncology quality. Dr. Boike completed a term on the executive committee for the Michigan Radiation Oncology Quality Consortium. He has helped further national quality efforts by serving on ASTRO's APEX Committee and as a radiation oncology practice surveyor for APEX. He has also been active in enrollment to clinical trials and is a member of NCI Prostate Cancer Task Force. He has numerous publications focusing on prostate, breast and lung cancer.



## Yancey Bond, BS

Yancey Bond holds a Bachelors Degree in Computer Science and is the Director of Solutions/Applied Analytics at WellSky. Yancey and her team have worked with providers of home health, hospice and private duty, across the country, in the development and refinement of both predictive and performance analytics – evolving practice in service of advancing value-based models of reimbursement and clinical care delivery in care at home. Ms. Bond has worked supported multiple provider case studies in hospitalization reduction, utilizing predictive analytics, proving principles while helping providers manage increasing acuity and risk.



# CONFERENCE SPEAKERS



## **Gloria Brooks**

Gloria Brooks launched G. Brooks & Associates LLC in January 2020 to serve post-acute continuum of care providers. Her focus is to facilitate strategic visioning plans, nonprofit partnerships, and leverage technology to transform clinical care models. Gloria has 15 years as executive leader of legacy nonprofit hospice providers in Michigan and Colorado. During her tenure as President of Pikes Peak Hospice & Palliative Care in Colorado Springs, CO and Arbor Hospice & Palliative Care in Ann Arbor, Michigan, she led the financial and operational turnaround of these legacy nonprofit end of life care providers. During her decade of service at Arbor Hospice, Gloria launched a home-based palliative care service line, led a financial turnaround to erase a \$2 million operating loss and initiated a successful fundraising campaign to support capital and program needs. She also led the effort to affiliate with Hospice of Michigan, Michigan's largest nonprofit hospice provider, leading to the creation of the Northstar Care Community. Gloria earned her Master of Public Administration from Oakland University, Rochester, MI. Gloria received her Bachelor of Science in Art Therapy degree from the University of Evansville, Evansville, IN.



## **Rick Brummette, RN, BSN**

Rick graduated from Michigan State University's College of Nursing and has been a Registered Nurse for over thirty years. He has been in survey and certification for 18 years, eight of those years surveying Medicare certified healthcare providers and 10 years as manager of the Specialized Healthcare Services Section. He specializes in assessing quality of care through documentation, clinical record reviews and interviews for home health, hospice, outpatient physical therapy and rural Health clinic conditions of participation



## **Virginia Caldwell MM, MT-BC**

Virginia Caldwell, MM MT-BC, is a masters level music therapist who is board certified and has spent most of her career working in the Mid-Michigan area. Virginia graduated from Michigan State University and has worked as a music therapist for over 15 years. Her work has spanned the areas of Behavioral Health, At Risk Youth, and End of Life care. With the bulk of her work being in end-of-life care, she uses music to assist patients and families come to terms with death and dying, as well as manage the feelings of grief and loss that follow. Virginia's approach to hospice music therapy is very humanistic. She believes hospice work is not a job but a privilege. "Working in collaboration with the team to address the spiritual, emotional, social and physical needs of patients allows me to bring patients and their families together by using various music interventions that are need specific, as well as using legacy creation. This is the highlight of my work-day." Virginia has had the opportunity to present locally, nationally, and internationally on the benefits of music therapy in end-of-life care.



## **Cynthia Campbell, MBA, BSN, RN**

Cindy Campbell is a nationally recognized thought-leader and management consultant to the continuum of healthcare at home. Cindy holds a Master of Health Administration with specialty in Healthcare Informatics, and a Bachelor of Science in Nursing. Cindy brings deep experience leading multi-service line healthcare at home, followed by over 20 years of work with Fazzi Associates, now proud to be a fully integrated member of the WellSky family of companies. Cindy and her team help agencies leverage strategic thought and operational efficiency into organizational, work-process and clinical model design for Home Health, Hospice, Palliative Care and Private Duty organizations throughout the United States. Cindy has served as a Board Member of the National Association for Homecare & Hospice, Chair of the Pediatric Homecare & Hospice Association of America, and member of the Executive Committee of the American Telemedicine Association's Homecare and Remote Monitoring Special Interest Group. A passionate advocate for innovation on behalf of patients and industry, Cindy is committed to driving methodology to best serve the needs of advancing healthcare at home.



## **Barry Cargill, CAE**

Barry is the President & CEO of the Michigan HomeCare & Hospice Association (MHHA), the state association for the Michigan home care industry including home health, hospice, palliative care, pharmacy infusion, private duty, and home medical equipment. Home care is a growing industry that contributes significantly to reducing health care cost and improved quality of life for person who are disabled, injured, or seniors choosing to stay in their home longer. Barry has 40 years of federal and state government regulatory and legislative policy experience. He began his MHHA career in 2011.



## **Greg Cavanaugh**

Greg currently works as the Vice President of Business Development for Sciometrix. With a long career in healthcare IT Greg has always worked to accelerate the success of collaborative data sharing to improve clinical care, reduce costs and increase the satisfaction of stakeholders across the care continuum. In addition to his work in healthcare Greg has also worked as an Adjunct Professor and is currently on the Education Committee for MHHA and the Early Careerist and Program Committees for Healthcare Financial Management Association (HFMA). He is also on the Board of Trustees of the Packard Proving Grounds Historic Site.

# CONFERENCE SPEAKERS



## **Linda (Andi) Chapman, RN, CDP, CADDCT, EPECT**

“Andi” Linda Chapman RN, CDP is committed to helping others understand many topics in medical care and life in general. She is employed by Amara Hospice and is an author/presenter for Wayne State University Institute of Gerontology serving on the Speakers Board and author/presenter for SelectMed Seminars. Writing and presenting in-service and CEU programs on a variety of topics to licensed healthcare providers, community groups, long term and assisted living facilities for residents, families and direct care workers and helping to facilitate Alzheimer’s and dementia support groups are some of her great joys. She is a member of the Michigan HomeCare and Hospice Association (MHHA). In 2019 she was instrumental in obtaining the “Memory Care Home Care Commendation” from the NCCDP for three Heart to Heart Hospice locations in Michigan and has been honored as one of the “Distinguished Educator(s) of the Year” by the National Council of Certified Dementia Practitioners (NCCDP). “Andi’s” philosophy is simple: Life provides us many opportunities and challenges and that can serve as a great teacher. Knowledge can indeed be power in our lives, but as it empowers us, it should be shared to benefit others. Through personal trials and experiences prior to becoming a nurse and educator, she believes that understanding and compassion in providing care is the underlying foundation for success in improving care, touching one life after another.



## **Arnie Cisneros, PT**

As President of Home Health Strategic Management, Arnie has provided clinical services, program development, and management consultation in the areas of Post – Acute care, sports medicine, and Episodic Programming for more than 30 years. He is renowned for his adaptation of traditional care philosophies to address current and future healthcare reform initiatives. Having delivered care across an evolving care continuum during the PPS era, he is able to position HHSM as the leading Post – Acute consulting firm in terms of rewiring care for quality clinical outcomes. As a result, HHSM has been selected as Post – Acute consultants for multiple Pioneer ACOs, including the awarding and development of a CMS Innovation Center Bundling Pilot Demonstration Project in conjunction with the Detroit Medical Center. The subsequent Bundling program served as the basis of the first mandatory CMS Alternative Payment Model (APM), Comprehensive Care for Joint Replacements (CJR). HHSM subsequently became Post-Acute clinical consultants for the DMC MI Pioneer ACO, managing all DMC discharges for Sub – Acute and Home Health services. HHSM is a leader in the establishment of a Utilization Review (UR) Model for Home Health care development and delivery. The HHSM UR Model, SURCH – Service Utilization Review for Care in the Home, was named the 2016 VNAA Innovative Home Health Care Model for its ability to successfully address and program care in terms of the quality requirements. The SURCH model routinely increases Care-Mix and HHRG levels >25%, decreases nursing staffing costs while improving productivity, manages care on an in-episode basis, and delivers 4.5 – 5 Star Ratings; all in an audit – proof manner.



## **Yolanda Crosby, RN**

Yolanda Crosby is a Surveyor-12 for the Specialized Health Care Services section of the Acute & Continuing Care and Support Division, Bureau of Survey and Certification for the State of Michigan’s Department of Licensing and Regulatory Affairs. Her role as a surveyor entails ensuring that Home Health and Hospice Agencies adhere to the requirements of the Medicare Conditions of Participation. Yolanda began her nursing career in 1994 and has been employed with the State of Michigan for 14 years. She enjoys time with her family and traveling to new and exciting places.



## **Keli DeVries, LMSW**

Keli DeVries, LMSW, serves as Michigan Oncology Quality Consortium’s Program Manager. She completed both her undergraduate degree and her Master of Social Work at the University of Michigan. Keli began her career as a licensed clinical social worker in the Emergency Department at Michigan Medicine, and eventually moved into social work leadership. After 10 years working in the Department of Social Work and the Department of Care Management, Keli became the Call Center Manager for the Frankel Cardiovascular Center at Michigan Medicine. Throughout her career she has been a champion for diversity, equity, and inclusion for all populations that access or work within health care. Keli has special interest in the well-being of health care professionals and in burnout prevention, which therefore improves the quality of the patient care provided.



## **William Dombi, Esq.**

Mr. Bill Dombi is the President of the National Association of Home Care & Hospice (NAHC). He previously served as Vice President of Law at NAHC. As a key part of his responsibilities, Bill specialized in legal, legislative and regulatory advocacy on behalf of patients and providers of home health and hospice care. With nearly 40 years of experience in health care law and policy, Bill has been involved in virtually all legislative and regulatory efforts affecting home care and hospice since 1975, including the expansion of the Medicare home health benefit in 1980, the formation of the hospice benefit in 1983, the institution on Medicare PPS for home health in 2000, and the national health care reform legislation in 2010. With litigation, Dombi was lead counsel in the landmark lawsuit that reformed the Medicare home health services benefit, challenges to HMO home care cutbacks for high-tech home care patients, lawsuits against Medicaid programs for inadequate payment rates, along with current lawsuits challenging the Medicare home health face-to-face encounter rule and the Department of Labor changes to the overtime rules under the Fair Labor Standards Act. In addition to litigation, Bill offers extensive community and professional educational services through lectures, publications, teleconferences and videos.

# CONFERENCE SPEAKERS



## **Craig Douglas**

Craig currently serves as Vice President of Payer and Member Relations for VGM & Associates, where he focuses on helping providers navigate payer relationships. Craig helps address concerns that are impacting VGM's broad range of members from a payer perspective, including medical policies, adequacy of provider networks and reimbursement, and alternative payment models aimed at achieving better care, better outcomes, and lower overall healthcare costs. Craig has also previously served as Vice President of Provider Relations for VGM's Homelink division, where he built and fostered relationships with payers and providers across the country. Craig has been with VGM since 1999.



## **Tausha Duncan, MS, HRM**

Tausha Duncan is currently the Senior Provider Relations Analyst with CGS Administrators. In this role she educates Suppliers on Durable Medical Equipment, Prosthetics, Orthotics, and Supplies (DMEPOS) policies, provides one-to-one education to DMEPOS suppliers who have high numbers of claim reopenings or claim rejections, speaks at workshops, association meetings, and other requested engagements and, conduct and assist on webinars to educate suppliers on topics chosen by the POE team. Tausha has been at CGS Administrators for the past several years in other roles such as Provider Relations Representative and Claims Appeals Customer Service Advocate. She has Bachelor of Arts in Political Science from University of Central Oklahoma and a Masters in Human Resource Management from Strayer University in Nashville.



## **Kristal Foster, BA**

Kristal Foster is the Manager of the Federal Support & Enforcement Section of the Federal Survey & Certification Division, Bureau of Community & Health Systems. She acts as the coordinator and monitor for CMS priorities and timelines. She is a graduate of Michigan State University with a degree in Political Science and has worked for the State of Michigan for 11 years. Kristal enjoys reading, walking her dog, and caring for her foster daughters.



## **Ellen Fulp, PharmD, MS**

Ellen Fulp earned her bachelor's degree in Pharmaceutical Science and her Doctor of Pharmacy Degree from the University of North Carolina at Chapel Hill. She completed her master's degree in Palliative Care at the University of Colorado Denver, as the only pharmacist member of the inaugural class. Ellen is Board Certified in Geriatric Pharmacy, specializing in safe, appropriate medication use in the elderly. Since 2013, she has been on staff at AvaCare, an independent hospice pharmacy benefits manager. Currently, Ellen serves as the Director of Pharmacy Education for AvaCare. She routinely provides consult regarding appropriate symptom management, regulatory issues, and medication appropriateness at end-of-life. Ellen works closely with state hospice and palliative care organizations to improve quality of life and medication use for patients facing serious illness. She is the immediate past chair of AAHPM's pharmacotherapy special interest group and is currently serving as the leader of MyNHPCO's pharmacist section steering committee. Ellen is the 2022 Peter Keese Leadership Award recipient, recognizing her contributions to advancing hospice and palliative care in the Carolinas. Ellen's professional interests include pain management in the geriatric patient population, medication appropriateness, and expanding access to palliative care resources.

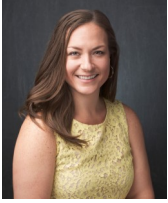


## **John Gallagher, BS**

John Gallagher is Vice President of Government Relations for The VGM Group, Inc, in Waterloo, Iowa, the largest organization representing independent durable medical equipment providers. John oversees key government and regulatory affairs that pertain to the DME industry. John has been conducive in working with independent providers and state associations to promote the DME industry, while advocating for beneficiaries access to quality care.



# CONFERENCE SPEAKERS



## Kelly Grahovac, MBA

Kelly Grahovac serves as a Senior Consultant for The van Halem Group where she focuses on audits, appeals, education and training across multiple lines of business and various specialties. Kelly is a known lecturer in the DME industry, speaking at national conferences, state associations, and for private events. Kelly has nearly 10 years of experience at one of the nation's leading Medicare contractors where she worked for the DMERC, QIC, and A/B MAC. She has since brought this knowledge and experience over to The van Halem Group, where she has been working since 2013 to assist providers as they navigate the ever changing healthcare payor landscape. Kelly Grahovac serves as a Senior Consultant for The van Halem Group where she focuses on audits, appeals, education and training across multiple lines of business and various specialties. Kelly uses her 15 years' experience in Medicare regulations to assist providers as they navigate the ever changing healthcare payor landscape.



## Jennifer Griggs, MD, MPH

Dr. Griggs is Michigan Oncology Quality Consortium's Program Director. Dr. Griggs received her undergraduate degree from Mount Holyoke College and her MD from the University of Buffalo. She completed her Residency and Chief Residency in Internal Medicine and Fellowships in Hematology and Oncology and Health Services Research at the University of Rochester. She was then the Director of the Comprehensive Breast Cancer Program at the University of Rochester in the James P. Wilmot Cancer Center in Rochester, New York. In September 2006, she joined the faculty at Michigan Medicine, Comprehensive Cancer Center (MMCCC) with a practice in the Breast Oncology Program. Dr. Griggs' research interests focus on patient-provider communication, quality of care, including end-of-life care, and care of cancer survivors. She is the Past Chair of the Clinical Practice Guidelines Committee at the American Society of Clinical Oncology (ASCO), was a member of the ASCO Health Disparities Committee, and has been the Chair or Co-Chair of several clinical practice guidelines.



## Kathy Grinsteiner, MA

Kathy Grinsteiner is the owner of EverGROWTH Consulting, an organizational development firm that helps clients maximize their greatest asset: their people. She works with leaders and teams to improve their communication and their culture. Kathy is one of those odd people who actually loves conflict - the healthy kind. She earned her Masters degree in Communication from Grand Valley State University, although she fully acknowledges that no one is truly a master of communication. We are all works in progress, with a heavy emphasis on progress.



## John Iannarelli, Esq, CSP

John Iannarelli served as an FBI Special Agent for 20 years, during which he was a SWAT team member and participated in the investigations of the Oklahoma City bombing, the 9/11 attack, the shooting of Congresswoman Gabrielle Giffords, and the Sony hack. Among his many FBI assignments, John served as the FBI's National Spokesperson, on the Cyber Division Executive staff, and was as an Assistant Special Agent in Charge overseeing all Criminal, Cyber and Counterintelligence investigations. He was recognized with the FBI's Director Award for Distinguished Service. A former San Diego Police Officer and attorney with international studies at Oxford England, John is admitted to the practice of law in California, Maryland, and Washington DC. In addition, he is the recipient of an Honorary Doctor of Computer Science in recognition of his contributions to the field of cyber investigations. John was also an NFL Security Representative responsible for ensuring public safety throughout the football season and the Super Bowl. John is the author of five books, including *Why Teens Fail and What to Fix*, a parents' guide to protecting their children on the Internet and other dangers, and *How to Spot a Terrorist Before It's Too Late*. His just released 5th book, *Disorderly Conduct*, examines the lighter side of law enforcement and the humorous moments during his FBI career. John is a frequent on-air contributor for the national news media and has been profiled in Forbes. He provided live on-scene coverage from Las Vegas of the Mandalay Bay mass shooting attack as it occurred. An engaging and entertaining keynote speaker, John is a National Speakers Association Certified Speaking Professional (CSP®) known for sharing his intriguing insights combined with his superb sense of humor. He has presented to Fortune 500 companies, domestic and international audiences, the United Nations, and the Vatican, where he has personally met on several occasions with Pope Francis.



# CONFERENCE SPEAKERS



## **Sandi Jones, BA, MA**

Sandi Jones joined Muchmore Harrington and Smalley Associates (MHSA) in 1996 and became a partner in 2003. She adds over 30 years of governmental and community relations experience to the MHSA team and is considered one of Lansing's top ten lobbyists and one of the most powerful female lobbyists in Michigan. Specializing in appropriations, judiciary, mental health, long-term care, law enforcement, criminal justice, and education issues, Sandi enjoys influencing change in the legislative and regulatory processes. Sandi holds a bachelor's degree in Communications with a minor in Marketing and a Master's in Public Administration, both from Western Michigan University (WMU). She holds the distinction of being the first female to have served as the president of the student body at WMU. Sandi is a member of the Honor Society of Phi Kappa Phi, Pi Alpha Alpha National Honor Society for Public Affairs and Administration, the Michigan Political History Society, Michigan Society for Association Executives, the American Society for Public Administrators and is a founding member of In Forum and The White House Project. In addition to her education-related organizations and associations, Sandi is on the Board of the Covenant Academies Foundation, the LCS Foundation, the Michigan Fraternal Order of Police, Lodge 200, and the Children's Trust Fund. She has helped build homes for Habitat for Humanity and facilitates mock lawmaking sessions with the Michigan Youth Leadership Forum, a program to introduce high school students with disabilities to state government. Sandi and her husband John reside near Lansing and have six children, two dogs and five fish. One of the fish came to the Jones household in a plastic sandwich bag from the Calhoun County Fair in 2014 and is still alive and swimming!



## **Michael Kern, JD**

Michael Kern is an Associate Principal in the Detroit office of Kitch Drutchas Wagner Valitutti & Sherbrook. He focuses his practice on the representation of post-acute care and senior living providers throughout the United States in administrative and regulatory matters, senior housing, and medical malpractice defense. As part of his practice, he provides legal guidance to his clients in addressing the myriad of challenges they face on a daily basis, which include general healthcare and regulatory compliance, corporate compliance, federal and state administrative law, defense of state and federal false claim actions, and professional negligence claims. Prior to joining Kitch, Mr. Kern practiced law in Boston, Massachusetts where he specialized in insurance and general liability defense at a national law firm. Mr. Kern is admitted to practice law in Michigan and Massachusetts as well as the U.S. District Court Eastern District of Michigan and the U.S. District Court District of Massachusetts. He received his J.D. from Boston College Law School and a Bachelor of Arts in Political Science from the University of Michigan.



## **Nandip Kothari, MBA**

Nandip is a seasoned technology executive and entrepreneur with more than 30 years of product, marketing, and operations experience. He started his professional career at Motorola, re-engineering business processes and rolling out enterprise software at factories in the US and internationally. During his MBA, Nandip launched a startup which was subsequently acquired by publicly traded iManage Inc in 2001. He joined the leadership team of SMARTMD in 2008 to transform the business from services into a software platform company. During his tenure, SMARTMD has launched multiple products for healthcare organizations that serve the seriously ill population. Nandip attended Rensselaer Polytechnic Institute where he earned his Bachelor of Science in Electrical Engineering with a major in Artificial Intelligence. He graduated with a Masters in Business Administration from Kellogg School of Management in Chicago, majoring in strategy and marketing. He currently serves on the board of Hosparus Health in Louisville Kentucky, and holds a US patent.



## **James LaBerge, DO**

Dr. James LaBerge currently serves as the Medical Director for Hospice of Lansing, Stoneleigh Residence & Ionia Area Hospice. He earned his Doctor of Osteopathic Medicine degree from Michigan State University. He is Board Certified in Family Practice, Hospice and Palliative Care and is a Certified Medical Director. He has over 18 years of Hospice Medical Director experience, including serving as National Medical Director for Hospice Advantage. Dr. LaBerge brings a wealth of wisdom and compassion to his patient care. He enjoys working with hospice and elderly patients and he has over 35 years of experience in family practice as well. Dr. LaBerge is an enthusiastic member of the community, speaking at local community events. He has presented to the AARP Caregiving Forum and through his past military service as Hospital Corpsman in the Navy. When not working for his patients or participating in his community, Dr. LaBerge enjoys spending time with his wife of over 49 years, their 3 daughters, and 6 grandchildren and cheering for his beloved Michigan State Spartans.



## **Christine Lau, RN, LCSW, APHSW-C**

Christine Lau is currently the VP of Serious Illness and Care Management with Teleios Collaborative Network as well as the Co-Founder for CareAlly Health and faculty for Four Seasons Consulting Group. She has vast knowledge in the Palliative Care arena from past work experience and education. Christine holds a Bachelors of Social Work from Michigan State University, Masters in Social Work from University of Michigan and Post Masters Certificate in Palliative Care Social Work from California State University.

# CONFERENCE SPEAKERS



## **Josh D. Luke, PhD, FACHE**

Dr. Josh Luke is a long-time hospital CEO and healthcare futurist, a four time Amazon #1 Best Selling Author, a Forbes Columnist and Author, a leading international speaker and faculty emeritus at the University of Southern California. Dr. Luke emerged as one of America's leading keynote speakers speaking on healthcare topics and has since become well known as one of the most engaging and entertaining mainstage association and corporate speakers on multiple topics. At age 32, Dr. Luke became a hospital CEO and after ten years left to design university-level coursework for USC and to start his own not-for-profit company. He has extensive experience in and knowledge of America's healthcare delivery system and is widely regarded as America's Healthcare Affordability Authority – teaching audiences how to better access and spend less on healthcare services. With well over 200 speaking appearances since 2011, Dr. Luke has solidified himself as one of the most sought after keynote and breakout presenters. As a professional 'Edutainer,' he is known for his humor and use of personal stories to engage audiences and teach businesses and individuals how improve efficiency, quality of life and profitability. Dr. Luke travels the world sharing the well-kept secrets of the healthcare industry and educating families and businesses on how to escape the healthcare affordability crisis.



## **Clare C. Luz, PhD**

Clare Luz, PhD, Associate Professor, Family and Community Medicine, MSU College of Osteopathic Medicine, and founding director of both MSU AgeAlive and IMPART Alliance, is a gerontologist whose research focuses on long-term care health services, particularly the caregiver workforce shortage. IMPART Alliance is dedicated to helping MI build an infrastructure that expands and supports direct care workers (DCW). She Co-chairs both the statewide MDHHS DCW Advisory committee and the statewide MI DCW Coalition both of which collaborate with community partners to generate innovative, feasible, affordable strategies to improve DCW's economic well-being. Dr. Luz has served on the Michigan Long-Term Supports and Services Advisory Commission, the Michigan Society of Gerontology board, and the National Quality Forum's Home and Community-Based Care Committee.



## **Jake Lyons, CFRE, CNP**

As a Lyons fourth generation fundraiser, Jake has worked with PRIDE Philanthropy for nine years. He is a full-time philanthropy professional, educator, and speaker. Jake manages fundraising campaigns, fund development assessments, audits, and feasibility studies. He also creates all subject matter and curriculum for the CFRE accredited conference series, the PRIDE Development Institute. This educational series includes year-round seminars, workshops, and academy programs for both emerging and experienced philanthropy professionals. Jake is a member of the Tennessee Southeastern Chapter of the Association of Fundraising Professionals (AFP) and a philanthropic education partner/educator for Venture Forward, a local community nonprofit education and advocacy organization. He is the Founder and Chief Executive Officer of Virtual Arts Inc., a nonprofit dedicated to bringing performance opportunities, community, and scholarships to thousands of members around the world. Jake also serves on the Governing Board of Equinox Percussion Inc., a nonprofit competitive percussion ensemble, most recently performing at halftime for Super Bowl LIII with Maroon 5. Previously, Jake served four years as an instructor in the music department at the University of Georgia in Athens. He has a degree in Communications from the University of Georgia and is based in Chattanooga, Tennessee, was one of the youngest in the country to earn a (CFRE) Certified Fundraising Executive, and also holds his CNP (Certified Nonprofit Professional).



## **Jennifer Mansfield, MA**

As a trainer, speaker, mentor, and community activist, Jennifer is passionate about making a difference in the lives of others. Jennifer's extensive training experience includes corporate presentations, state and national conferences, and community forums. An energetic presence, Jennifer brings attention and action to the needs and causes around her, including mentoring local youth, founding and training a Community Emergency Response Team, developing and guiding SOAP Redford (Save Our Adolescents from Prostitution) in her passion to spread awareness of Human Trafficking, and networking with multiple businesses and organizations to reach common goals. As a Lieutenant in the Redford Township Police Department, with over 22 years of experience, Jennifer has developed a wide array of skills in communication including verbal de-escalation, public speaking, human trafficking, body language, conflict resolution, and report writing that she is ready to share. Jennifer is a trainer and partner with Coeus Creative Group. As a trainer, speaker, mentor, and community activist, she is passionate about making a difference in the lives of others. Jennifer has had the opportunity to work with large corporations such as Henry Ford, Beaumont Health, TCF Center, and the University of Michigan Hospitals, as well as governmental organizations such as the Michigan Municipal League and education as a guest lecturer at Schoolcraft College. Her extensive training experience includes corporate presentations, state and national conferences, and community forums. An energetic presence, Jennifer brings attention and action to the needs and causes around her, including mentoring local youth, empowering women through RAD Self-Defense instruction, founding and training a Community Emergency Response Team, developing and guiding SOAP Redford (Save Our Adolescents from Prostitution) in her passion to spread awareness of Human Trafficking, and networking with multiple businesses and organizations to reach common goals. Jennifer holds a Bachelor's degree in Public Safety Administration from Eastern Michigan University and a Master's degree in Public Relations and Organizational Communication from Wayne State University, where she is a member of their exclusive Speakers Bureau. Jennifer is a graduate of Eastern Michigan University's Police Executive Staff & Command (Class 37) and is pursuing a Master's degree in Masters of Public Administration Non-profit Professional).

# CONFERENCE SPEAKERS



## **Robert Markette, Jr., JD, CHC, HCS-C**

For more than a decade, Robert W. Markette, Jr., CHC, has focused his practice on representing home health, hospice, private duty and DME providers in all aspects of their operations. Working with these industries, Robert has developed a reputation for understanding the operational, compliance and legal/regulatory issues facing homecare providers. In representing the homecare industry, Robert has assisted clients in a number of areas related to the operation of their business. He works with his client on issues related to Medicare/Medicaid compliance including surveys, responding to surveys, state and federal appeals of survey findings; payer issues, including appealing payer audit findings; HIPAA Compliance; Medicare and Medicaid fraud and abuse, including matters such as developing and implementing compliance programs, performing internal investigations and representing providers in external investigations and civil and criminal matters. Robert also assists clients with purchasing and selling home health, hospice and private duty agencies. Robert also addresses legal issues related to employment matters. This includes wage and hour compliance, responding to Department of Labor investigations, and litigating wage and hour disputes. Robert is recognized for his expertise in this space and is a frequent speaker on home health, hospice and private duty matters across the country. Robert has presented to the American Health Lawyers Association, the National Association for Home Health and Hospice Care, DecisionHealth as well as other national speaking events and numerous state trade association conferences and continuing education sessions. Robert serves on both the Board of Medical Specialty Coding and the Association for Home Care Compliance. Robert drafted the Second Edition of the Homecare Administrator's Field Guide and the Home Health Patient Rights Policy and Procedure Manual. Robert graduated from Hanover College with a degree in Computer Science and received his law degree from Indiana University School of Law in Bloomington, Indiana. Robert is a member of the American Health Lawyers Association, the Health Care Compliance Association and the Indiana and Oklahoma State Bar Association. Robert is certified in health care compliance by the Health Care Compliance Board. Robert is admitted to practice in Indiana and Oklahoma.



## **Caren McHenry Martin, PharmD, BCGP**

Dr. Martin earned her Doctor of Pharmacy degree from the University of Nebraska Medical Center and completed an executive residency with the American Society of Consultant Pharmacists. She has enjoyed working in a wide range of nonconventional clinical roles, including pharmacy association management, senior care, pharmacy benefits management, ambulatory care, value-based care, and hospice. She is a board certified geriatric pharmacist, has worked as a North Carolina Clinical Pharmacist Practitioner, and has authored more than a hundred articles for national pharmacy publications. Dr. Martin is currently serving in the role of Senior Clinical Manager at Enclara Pharmacia.



## **Arlene Maxim, RN, HCS-C**

Arlene is a Registered Nurse and Home Health and Hospice Consultant who is certified in Compliance with HCS-C credential. She is a frequently sought-after speaker for patient care quality, analysis, and administrative functions in the post-acute healthcare world. Arlene serves as a Board Member and Vice Chair for the Association for the Homecare/Hospice Coding and Compliance in Gaithersburg, Md. The current focus of public speaking, training and consulting include, but is not limited to, newly released Conditions of Participation, Face to Face strategies, PDGM, RCD, Star Ratings in homecare and hospice; functional improvement in patients in the home, the reduction in hospitalization and other significant changes we should expect in the near future. Arlene currently leads innovative change across the health care continuum. She has developed and implemented a multiple post-acute care programs working closely with multiple hospitals, homecare and hospice agencies, and Accountable Care Organizations.



## **Kimberly McCormick, BSN, RN**

A highly accomplished nurse consultant in the Home Health industry, Kim is an Executive Clinical Director for Home Health Strategic Management. Twenty-four years experience in Home Health, eight as Administrator of a home health agency, which has given her the experience and the knowledge to provide unrivaled insight into the home care arena. Kimberly served as an Associate Consultant with Home Health Strategic Management for two years, during which she has established herself as an expert in the area of Utilization Management of Home Health services. During her time as Administrator, she achieved deficiency-free surveys by The Joint Commission, deficiency-free Department of Health and CMS surveys, and a 0.42% error rate on an ADR audit. Kimberly authors the HHSM nursing newsletter and is presenting nationally on home care topics and care models proposed by CMS and MedPac for the future of the Home Health industry.



# CONFERENCE SPEAKERS



## **Cleamon Moorer, Jr., PhD**

Cleamon is the Co-founder and President of Partners in Wellness Management, LLC., President and CEO of American Advantage Home Care, Inc., host of the Home Health Care Today Show (an award winning podcast and webcast), and Founding Executive Director of Eye Care for Detroit, Inc. Experienced as an administrator, engineer, consultant, educator, and civic leader. Cleamon was a business school dean at Madonna University and Baker College, and a professor at multiple universities in Illinois and Michigan. Named a Modern Man of Distinction by Black Enterprise Magazine in 2017, and given the title, Mr. Higher Learning by the magazine's editorial board. He was responsible for leading Madonna University's business school to initial accreditation by the Accreditation Council for Business Schools and Programs (ACBSP) and reaffirmation of Baker College's business programs accreditation by the International Accreditation Council for Business Education (IACBE). Under, Cleamon's leadership, business school graduates ranked the best in the nation on the standardized, Educational Testing Service (ETS) field exam. He has been recognized both locally and nationally for outstanding leadership and contributions. In 2022, Cleamon was first recognized by the Kettering/GMI Alumni Association (KGMIAA) for Entrepreneurial Achievement and in 2011 for Civic Achievement, then named a Rising Star by Benedictine University's Alumni Association (2014). A Spirit of Detroit Honoree (2015) recognized by the Detroit City Council. Named to "40 under 40" lists by Crain's Detroit Business (2014), Michigan Chronicle (2015), and The Network Journal-NYC (2015). One of DBusiness Magazine's 30 in their Thirties (2015), Detroit Pistons Game Changer (2016) and a Golden Hammer Award Winner by Habitat for Humanity – Macomb County (2019). In 2022, CORP! Magazine named him a Most Valuable Professional (MVP) as an entrepreneur. Dr. Moorer sits on the boards of Big Brothers and Big Sisters of Greater Flint, CVF Credit Union, Habitat for Humanity - Detroit, and the Michigan HomeCare and Hospice Association. He earned a bachelor's degree in Management Information Systems from Kettering University, double-master's degrees from Benedictine University, a Doctor of Business Administration from Argosy University, a certificate in Business Excellence for Health Professionals from Cornell. He is currently pursuing an BSN in Nursing in route to receiving a registered nursing license.



## **Katherine Morrison, MSN, RN, CHPN**

Katherine Morrison is the Director of Hospice Consulting Operations for WellSky, is an RN and holds a Master of Science in Nursing with a major in Nursing Informatics and a focus on Homeland Security. She has served in advancing levels of hospice leadership within large, multi-site health systems both in the Midwest and on the eastern seaboard. Ms. Morrison is a passionate advocate for patients and providers of palliative care and hospice. She is a Certified Hospice and Palliative Care Nurse (CHPN) and an End-of-Life Nursing Education Consortium (ELNEC) trainer. Katherine serves on the National Association for Home Care and Hospice – Hospice Advisory Council. She has provided education to both large and small organizations with high acclaim. An expert hospice and palliative care practitioner, effective educator and practical operator, Ms. Morrison brings high credibility to her efforts to advance hospice practice and patient/family advocacy across the country.



## **Christopher Morrissette, MBA**

Christopher Morrissette has extensive operational experience within Palliative Care, hospice, homecare and senior living. His career began over 20 years ago working as a nursing assistant/personal caregiver in a behavioral group home serving adults with developmental disabilities. He attests that this experience was foundational in understanding the needs of complex populations. Christopher's hospice career began at in the Midwest where he served as a part of the executive team that expanded the continuum of care from a single location into a 3-state area throughout the Region. Christopher built strategic partnerships within the regional market and led the growth in census from 30 to 350 patients within two years; laying the foundation for the organizations current average daily census of over 1,000+ patients. Christopher joined Teleios Collaborative Network as Chief Operations Officer of Palliative Care in 2017. Christopher works in tandem with the CMO of Palliative Care in implementing operational and clinical Palliative Care Models where they partner to serve over 3,000 palliative care patients through excellence and innovated care delivery throughout the TCN Network. Christopher has worked to expand the role and standard of community based palliative care, demonstrating the transformative role of Palliative Care in the care continuum. Christopher holds an MBA in Healthcare Administration and an undergraduate degree in Ministry. He is passionate about healthcare and believes that hospice and palliative care is his true calling.



# CONFERENCE SPEAKERS



## **William O'Malley**

William was one of the founding members of Engage Health and currently serves as the Chief Operating Officer. In his current leadership role, William is responsible for guiding a wide range of governance, strategic and tactical initiatives which are critical in meeting operational and technological objectives. In addition, William is also responsible for creating and scaling a high performance, multidisciplinary team of professionals rooted in an intrapreneurial corporate culture. William brings over 13 years of senior healthcare leadership to Engage Health. Recently, he served as the Vice President of Healthcare Product Innovation at Performant Corp. In this position, William led the audit division which serviced the CMS Recovery Audit Contract for Regions 1, the National Region 5 DME, and other leading health insurers. During his tenure, he was responsible for developing and implementing the strategic audit activities. Previously, as founding member and Vice President of Operations for Veritas Medical Review Solutions, William led the implementation and operation of the first CMS RAC program for Region A, Part A, B and DME programs. In addition, his expertise was critical in developing new population and care management offerings for the organization. William holds a Bachelor of Business Administration in Business Administration and Management, Finance from The McGowan School of Business, King's College and a Master of Business Administration in Accounting and Finance from the Fox School of Business, Temple University.



## **Jeremy Powell, M.Ed**

Jeremy Powell has a 20-year track record in leading some of healthcare's most successful ventures. His career started at the bedside as a physical therapist. While working directly with patients and families, Jeremy quickly recognized the need to affect exponential change in advanced illness management and founded Acclivity Health Solutions. Today, the company continually strives to innovate and deliver the technologies providers need to ensure patients with advanced illness receive the right care at the right time in the right setting – while honoring the patient's dignity, goals and values. Jeremy is a frequent speaker for national healthcare conferences.



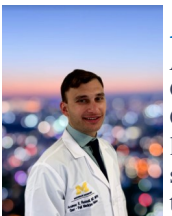
## **Brandon Quinn**

Brandon is an experience leader with a demonstrated history of proven success in the healthcare staffing and recruitment industry. He has 13 years experience in operations management, sales, Medicaid Serves, healthcare staffing, talent development and strategic business planning. He recently concentrated focus on Electronic Visit Verification and providing guidance to home care providers trying to navigate the state markets.



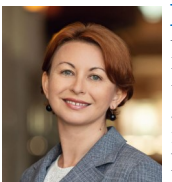
## **Theresa Ruedisueli, BA**

Theresa Ruedisueli is currently the Regional Director of Operations MI/WI at Addus Homecare/Arcadia Home Care and Staffing where she oversees 10 company owned offices in Michigan and Wisconsin. She successfully transitioned the company through acquisition and achieved revenue goals within the 2<sup>nd</sup> year. She is very active in the state wide advocacy efforts for Auto No Fault Reform and Direct Serve Worker wages and benefits. Prior to working at Arcadia, she was Vice President of Human Capital and Development. Theresa's has a BA in International Business from Alma College.



## **Andrew Elliott Russell, MD, MPH**

Andrew Russell MD is an Integrated Fellow in Geriatric & Palliative Medicine at the University of Michigan's Division of Geriatric & Palliative Medicine since 2021. He holds a medical doctorate degree from the University of Illinois at Chicago's College of Medicine, and a master's degree in Public Health from Washington University in St. Louis, MO. He is currently leading research projects as the lead investigator for the Outpatient Palliative Care Access Project and the Virtual Hypertension Management QI Project, as well as serving as the QI scholar on Healthcare Equity and Quality Scholars Program all at the University of Michigan.



## **Natalia Simon, MBA, MA**

Natalia Simon, MBA, MA serves as a senior project manager at MOQC. She came to MOQC from C. S. Mott Children's Hospital where she served as a Program Manager for Partners for Children, a community-based pediatric palliative care program for children with chronic complex conditions. In addition to running the program, she participated in the design and implementation of the NICU-based initiative for babies born with medical complexities, Little Victors League. Throughout her career, she managed numerous programs, grants, and contracts with a focus on healthcare research, international development, higher education, and social enterprises. Natalia has always been drawn to initiatives that yield high positive impact on people's lives, especially during their most trying and vulnerable times.

# CONFERENCE SPEAKERS



## **Stephanie Van Slyke, MS, RN, HEC-C**

Stephanie is a registered nurse with an extensive background in intensive care nursing, advance care planning, and clinical ethics consultation. She has a Master of Science degree in Healthcare Ethics, is a Certified Healthcare Ethics Consultant, and is a Respecting Choices Facilitator. She serves as the Senior Ethics Coordinator for Munson Healthcare and is intensely passionate about fostering ethically appropriate patient-centered care. Throughout her career she has witnessed countless situations when medical staff, patients, and/or families experienced confusion and uncertainty about what medical decisions *should* be made when a patient is unable to provide direct input. Everyone hopes to do the “right” thing and through her facilitation skills and experience, she helps stakeholders acknowledge emotional influences, recognize bias or judgement, and establish decision making frameworks that aim to safeguard patient care goals and acknowledge the limits of medicine.



## **Tracie Yurkinas, CTRS, BA**

Tracie Yurkinas has 33 years in the medical field. Was a Recreational Therapy Director for 28 years in LTC and assisted livings around Michigan. Tracie currently serves as the Volunteer Coordinator for Hospice of Lansing and Ionia Area Hospice. .

# 2023 Conference Agenda

## Tuesday, May 2nd

7:00 p.m. – 8:30 p.m. Pre-Conference Welcome Reception

7:00 p.m.—8:30 p.m. Pre-Registration/Material Pick up

## Wednesday, May 3rd

7:30 a.m. – 8:15 a.m. All Attendee Orientation Breakfast

8:30 a.m. – 9:30 a.m. **Opening Session: The Health System of the Future is in the Home**  
*Josh Luke, Ph.D., Founder & CEO, TRPG, Inc.*

**Audience:** Certified Home Health, Hospice, Private Duty, HME/Infusion, Palliative Care

**Program Participants will be able to:**

1. Discuss the shift in control from the hospital to the insurance sector and how patient flow, quality, outcomes and satisfaction will be impacted across the continuum and focuses on home based care.
2. Describe how home health and hospice providers can adopt best practices in adopting new procedures and data sharing in value based care.
3. Identify tactics to troubleshoot patients with challenging issues including social determinants, long-COVID and expensive medications or equipment.

9:30 a.m.—9:45 a.m. Break

9:45 a.m. - 11:00 a.m. Breakout Sessions

**Hospice Agencies Preparing for Federal Surveys - Top Deficiencies**

*Rick Brummette, RN, BSN, Section Manager, State of Michigan; Kristal Foster, Section Manager—Federal Support & Enforcement, State of Michigan; Jennifer Belden, Bureau Director, Bureau of Survey and Certification, State of Michigan; Yolanda Crosby, RN, Health Care Surveyor 12, State of Michigan*

**Audience:** Hospice, Palliative Care

**Program Participants will be able to:**

1. Identify the most commonly cited deficiencies occurring during the federal inspections.
2. Identify the importance of accurate and thorough documentation in maintaining compliance.

**HME Audit Climate: What You Need to Know**

*Kelly Grahovac, MBA, General Manager, The vanHalem Group*

**Audience:** HME/Infusion

**Program Participants will be able to:**

1. Identify issues/products that auditors from government and private/commercial payors are focusing their oversight efforts and which ones may be the subject of future oversight efforts.
2. Identify which audit entities are most active and identify steps a supplier can take to mitigate the impact of an audit and reduce denials or overpayments.

**OASIS E and Impact on Value Based Purchasing**

*Arlene Maxim, RN, HCS-C, Senior Vice President, Clinical Services, Access Technology*

**Audience:** Certified Home Health

**Program Participants will be able to:**

1. Articulate 3 specific OASIS E items and impact on Value Based Purchasing
2. Identify 3 weighted measures included in Value Based Purchasing payments.
2. Explain how the agency can impact weighted Value Based Purchasing items to influence bonus measure (s).

## Wednesday, May 3rd (continued)

9:45 a.m. - 11:00 a.m. Breakout Sessions

### Top Homecare Employer Mistakes

*Robert Markette, Jr., JD, CHC, Counsel, Hall, Render, Killiam, Heath & Lyman, PC*

**Audience:** Certified Home Health, Hospice, Palliative Care, HME, Private Duty

#### **Program Participants will be able to:**

1. Review laws that govern employment relationships.
2. Review Common mistakes.

### Michigan's Statewide Initiatives to Expand and Elevate the Direct Care Workforce (DCW)

*Clare C. Luz, PhD., Associate Professor/Director, IMPART Alliance, Michigan State University College of Osteopathic Medicine/Department of Family and Community Medicine*

**Audience:** Certified Home Health, Hospice, Private Duty, Palliative Care

#### **Program Participants will be able to:**

1. Discuss the scope, impact, and causes of the direct care worker shortage.
2. Discuss major statewide initiatives aimed at addressing the DCW shortage and their importance..
3. Discuss ways in which to engage in activities that expand and elevate DCWs in Michigan.

### Volunteer Recruitment 101

*Tracie Yurkinas, CTRS, BA, Volunteer Coordinator, Hospice of Lansing & Ionia Area Hospice*

**Audience:** Hospice

#### **Program Participants will be able to:**

1. Identify the Dos and Don'ts of recruiting volunteers.
2. Discuss how to get Volunteers engaged.
2. Discuss how to make the most of social media.

11:00 a.m.—11:15 a.m. Break

11:15 a.m.—12:15 p.m.

**Committee Round Table Meetings**— Private Duty Committee Meeting  
HME Committee Meeting  
Hospice/Palliative Care Committee Meeting  
Certified Committee Meeting

12:15 p.m.—1:00 p.m. **Networking Luncheon**  
Networking with friends and colleagues .

1:00 p.m.—2:30 p.m. Breakout Sessions

### Home Health Agencies Preparing for Federal Surveys - Top Deficiencies

*Rick Brummette, RN, BSN, Section Manager, State of Michigan; Kristal Foster, Section Manager—Federal Support & Enforcement, State of Michigan; Jennifer Belden, Bureau Director, Bureau of Survey and Certification, State of Michigan; Yolanda Crosby, RN, Health Care Surveyor 12, State of Michigan*

**Audience:** Certified Home Health

#### **Program Participants will be able to:**

1. Identify the most commonly cited deficiencies occurring during the federal inspections.
2. Identify the importance of accurate and thorough documentation in maintaining compliance.



## Wednesday, May 3rd (continued)

1:00 p.m.—2:30 p.m. Breakout Sessions

### Unlocking Performance Value in Care at Home: Strategic Use of Analytics

*Katherine Morrison, MSN, RN, CHPN, Director of Hospice Operational Consulting, WellSky; Cindy Campbell, MHA, BSN, RN, Director of Operational Consulting, WellSky; Yancy Bond, BS, Director of Solutions Applied Analytics, WellSky*

**Audience:** Certified Home Health, Hospice, Palliative Care, Private Duty

#### **Program Participants will be able to:**

1. Describe how the use of predictive and performance analytics can improve high value outcomes in care at home.
2. Discuss how to leverage the payer perspective on contracting and value-based outcome performance.
3. Explain how strategic use of predictive and performance analytics can enhance workforce engagement and retention.

### Medicare/Medicaid Managed Care: Rights of the DME

*Jeffrey S. Baird, JD, Chairman, Health Care Group, Brown & Fortunato*

**Audience:** HME

#### **Program Participants will be able to:**

1. Review federal and Michigan Law pertaining to Medicare Advantage.
2. Review federal and Michigan law pertaining to Medicaid Managed Care.
3. Identify the rights afforded to DME supplies under the federal and Michigan Law pertaining to Medicare Advantage and Medicaid Managed Care.

### Better Together: Oncology and Hospice Care

*Jennifer Griggs, MD, MPH, Program Director, Michigan Oncology Quality Consortium; Thomas Boike, MD, MMM, Radiation Oncologist, GenesisCare; Keli DeVries, LMSW, Program Manager, Michigan Oncology Quality Consortium; Natalia Simon, MBA, MA, Project Manager, Michigan Oncology Quality Consortium.*

**Audience:** Hospice, Palliative Care

#### **Program Participants will be able to:**

1. Discuss the Michigan Oncology Quality Consortium (MOQC's) mission and initiatives and explain the value-based reimbursement principles.
2. Identify MOQC's Palliative and End of Life work to date.
3. Discuss palliative radiation pathways.

### Maximizing Hospice Fundraising Income with a Small Philanthropy Team

*Jake Lyons, CFRE, CNP, President & CEO, Pride Philanthropy*

**Audience:** Hospice

#### **Program Participants will be able to:**

1. Identify best ROI activities for hospice fundraising and why they are at the top.
2. Optimize the top 5 income producing activities for hospice fundraising.

### Selling and Marketing to Hospitals in the Value Based Care Era

*Josh Luke, Ph.D, Founder & CEO, TRPG, Inc.*

**Audience:** Certified Home Health, Hospice, Private Duty, HME/Infusion, Palliative Care

#### **Program Participants will be able to:**

1. Discuss how hospitals referring patients are seeking a narrow network of post acute providers who understand the reimbursement structure of value based care.
2. Identify how home health and hospice providers can market their updated best practices in data sharing and value based care.
3. Identify tactics to troubleshoot patients with challenging issues including social determinants, long-COVID and expensive medications and equipment.

## Wednesday, May 3rd (continued)

1:00 p.m.—2:30 p.m.

Breakout Sessions

### Top 10 Practices of Volunteer Engagement

*Erin Beauprez, MPA, SHRM-PMQ, CFMLS, CAVS, CVA, Certified Child Safety Trainer, EB Consulting*

**Audience:** Hospice

#### **Program Participants will be able to:**

1. Explore 10 best practices that strengthen volunteer engagement.
2. Design plans to bring these practices to your team.
3. Explore how these 10 practices are not static, but grow and change with your organization.

2:30 p.m.—2:45 p.m.

Break

2:45 p.m.—4:15 p.m.

Breakout Sessions

### Program Integrity Audits—RACs, UPICs, & SMRCs

*Kelly Grahovac, MBA, General Manager, The van Halem Group*

**Audience:** Certified Home Health, Hospice

#### **Program Participants will be able to:**

1. Outline key details from current audit initiatives and recent contractor activity and identify strategies for managing audits by contractors.
2. Identify effective compliance risk assessment and mitigation procedures and learn how your agency can implement practices to assess risk and prepare for audits.

### Simplifying Surrogate Decision Making

*Stephanie Van Slyke, MS, RN, HEC-C, Sr. Coordinator of Collaborative Care, Ethics Services, Munson Medical Center*

**Audience:** Certified Home Health, Hospice, Palliative Care, Private Duty, HME

#### **Program Participants will be able to:**

1. Apply ethical frameworks associated with surrogate decision making.
2. Recall the various advance care planning documents, such as MI-POST.
3. Acknowledge surrogate limitations and ACP document requirements within the Michigan Law.

### Employee or Independent Contractor: Avoiding Employee Classification Errors

*Robert Markette, Jr., JD, CHC, Counsel, Hall, Render, Killian, Heath & Lyman, PD*

**Audience:** Certified Home Health, Hospice, Private Duty, Palliative Care, HME/Infusion

#### **Program Participants will be able to:**

1. Identify Employee classifications, what it is and why does it matter.
2. Identify how to address compliance issues related to employment and how to correct classification mistakes.

### Impact of Electronic Visit Verification on Home Health and Personal Care

*Brandon Quinn, VP Implementation, CellTRak –A Homecare Homebase Company; Don Beisert, Interoperability Product Manager, Homecare Homebase*

**Audience:** Private Duty, Certified Home Health

#### **Program Participants will be able to:**

1. Discuss impact of EVV regulations on home health/skilled services.
2. Examine provider responsibilities for EVV.
3. Discuss how providers can prepare for EVV implementation.

## Wednesday, May 3rd (continued)

2:45 p.m.—4:15 p.m.

Breakout Sessions

### Navigating Medicare Advantage Plans

*Jeffrey S. Baird, JD, Chairman, Health Care Group, Brown and Fortunato*

**Audience:** Certified Home Health, Hospice, HME/Infusion

#### **Program Participants will be able to:**

1. Discuss the Federal laws that govern Medicare Advantage Plans.
2. Explain how to negotiate key provisions of a managed care contract.
3. Discuss the level of government oversight of Medicare Advantage Plans.

### A Strategic Approach to Disputing Audits

*William O'Malley, COO, Engage Health Solutions*

**Audience:** HME/Infusion

#### **Program Participants will be able to:**

1. Describe the appeals process.
2. Discuss ways to approach the appeals process to optimize outcomes.
3. Discuss strategies to be implemented for overall process improvement.

### The Intersection of Volunteer Engagement & Human Resources

*Erin Beauprez, MPA, SHRM-PMQ, CFMLS, CAVS, CVA, Certified Child Safety Trainer, EB Consulting*

**Audience:** Hospice

#### **Program Participants will be able to:**

1. Discuss what Volunteer Programs and Human Resource Departments can learn from each other.
2. Discuss ways to best work together.
3. Identify best practices that volunteer managers can borrow from human resources to improve safety.
4. Discuss practical steps with volunteer screening, training and data that improve overall impact.

4:15 p.m.—4:30 p.m.

Break

4:30 p.m.—7:00 p.m.

Reception in the Exhibit Hall

## Thursday, May 4th

7:30 a.m.—8:15 a.m.

Continental Breakfast/Annual Business Meeting

8:15 a.m.—9:30 a.m.

General Session

### Cybersecurity for the Healthcare Profession

*John Iannarelli, JD, Esq, CSP, Owner/Speaker JI Consulting Group.*

**Audience:** Certified Home Health, Hospice, Private Duty, HME/Infusion, Palliative Care

#### **Program Participants will be able to:**

1. Identify applicable threats and what cybercriminals are seeking through online exploitation.
2. Identify the individual cybercrimes by name and how they are applicable to the healthcare industry.

9:30 a.m.—10:15 a.m.

Break in the Exhibit Hall

10:15 a.m.—11:45 p.m.

Breakout Sessions

### Riding the Value-Based Home Health Model to Successful Programming

*Arnie Cisneros, PT, President, Home Health Strategic Management; Kimberly McCormick, RN, BSN, Executive Clinical Director, Home Health Strategic Management*

**Audience:** Certified Home Health

#### **Program Participants will be able to:**

1. Discuss how Impact Act Reforms focus on Value Identity.
2. Demo how Value Based Care deviates from traditional home health care programming.
3. Discuss how to start a value-based operational model in your home health agency.
4. Identify outcomes from a value-based home health operational model.

## Thursday, May 4th

10:15 a.m.—11:45 p.m. Breakout Sessions

### Music Therapy: A Physician's Perspective and Other Fun Treatments

*James LaBerge, DO, Medical Director, Hospice of Lansing; Virginia Caldwell, MM, MT-BC, Music Therapist, Hospice of Lansing.*

**Audience:** Hospice, Palliative Care

#### **Program Participants will be able to:**

1. Discuss how music affects the body and mind.
2. Discuss OMT, Acupuncture and Hypnosis as way so of providing comfort.

### Legal/Regulatory Compliance Issues for Home Care

*Michael Kern, JD, Associate Principal, Kitch Drutchas, Wagner Valitutti & Sherbrook*

**Audience:** Private Duty, Certified Home Health, Hospice, HME/Infusion, Palliative Care

#### **Program Participants will be able to:**

1. Discuss HIPAA Compliance..
2. Discuss CURES Act Compliance.
2. Identify rules for Live in Caregivers.

### Palliative Care Telehealth Best Practices

*Christopher Morrissette, MBA, CareAlley Health; Christine Lau, RN, LCSW, APHSW-C, VP of Serious Illness and Care Management, Teleios Collaborative Network; Nandip Kothari, MBA, SMARTMD*

**Audience:** Hospice, Certified Home Health, Palliative Care

#### **Program Participants will be able to:**

1. Demonstrate increased knowledge of how to evaluate available technologies and strategies to implement telehealth services as evidence by passing a post-test with 80% or better.
2. Demonstrate increased knowledge of clinical best practice considerations in the provision of telehealth palliative care and describe the benefits of telehealth services as evidenced by passing a post-test with 80% or better.
3. Demonstrate increased knowledge of compliance and effectiveness of utilizing technology for consents and patient self-completed documentation as evidenced by passing a post-test with 80% or better.

### Active Shooter Prevention and Response

*John Iannarelli, JD, Esq, CSP, Owner/Speaker JI Consulting Group.*

**Audience:** Certified Home Health, Hospice, Private Duty, HME/Infusion, Palliative Care

#### **Program Participants will be able to:**

1. Identify historic events involving prior active shooter situations.
2. Identify common indicators that foreshadow active shooting situations.

### Working and Contracting with National Payers

*Craig Douglass, Vice President of Payer and Member Relations, VGM Group, Inc.*

**Audience:** HME

#### **Program Participants will be able to:**

1. Identify how to become a better and more attractive partner to national payers in your service area.
2. Identify what rights you have (and don't have) as a provider when working with national payers.

11:45 a.m.—12:30 p.m. Exhibit Hall Marketplace

12:30 p.m.—2:00 p.m. Awards Luncheon/Board Installation

2:00 p.m.—2:15 p.m. Break



## Thursday, May 4th

2:15 p.m.—3:45 p.m. Breakout Sessions

### Medicare Updates, TPE One on One Education, and the Oxygen LCD

*Tausha Duncan, MS, HRM, Senior Provider Relations Analyst*

**Audience:** HME/Infusion

**Program Participants will be able to:**

1. Identify program changes.
2. Review TPE.
3. Discuss Oxygen Policy Changes.

### Home Care & Hospice 2023: A Washington Update

*William Dombi, JD, President National Association for Home Care & Hospice*

**Audience:** Certified Home Health, Hospice, Private Duty

**Program Participants will be able to:**

1. Identify federal legislative issues affecting home care and hospice.
2. Identify federal regulatory issues affecting home care and hospice.
3. Recognize potential legislative and regulatory actions in 2023 that affect home care and hospice.

### Challenges with Opioids: Managing Adverse Effects and Treating Patients with Substance Use Disorders.

*Caren McHenry Martin, PharmD, BCGP, Senior Clinical Manager, Enclara Pharmacia*

**Audience:** Hospice, Palliative Care, Certified Home Health

**Program Participants will be able to:**

1. Discuss strategies for recognizing and managing opioid adverse effects.
2. Describe the differences in the use of buprenorphine and methadone for opioid addiction therapy vs. analgesia.
3. Identify three challenges or barriers to pain management in patients receiving methadone or buprenorphine treatment for opioid addiction.
4. Explain three basic approaches to pain management in the patient receiving methadone or buprenorphine treatment for opioid addiction.

### Auto No Fault Reform: Historical Recap and Current Status

*Theresa Ruedisueli, Regional Director of Operations, Michigan/Wisconsin, Addus Homecare/Arcadia Home Care & Staffing.*

**Audience:** Private Duty, Certified Home Health, Hospice, HME/Infusion

**Program Participants will be able to:**

1. Review Michigan Auto No Fault Pre-2019.
2. Discuss the 2019 ANF Reform Overview & Impact on post 2019 survivors/insured.

### Artificial Intelligence: The Future in Healthcare is Now!

*Greg Cavanaugh, MHA, VP of Business Development, Sciometrix*

**Audience:** Private Duty, Certified Home Health, Hospice, Palliative Care, HME/Infusion

**Program Participants will be able to:**

1. Define Artificial Intelligence.
2. Discuss how Artificial Intelligence works.
3. Identify how the data is used and the Patient/Provider benefits.

## Thursday, May 4th

2:15 p.m.—3:45 p.m. Breakout Sessions

### The State of Palliative Care in Michigan: Findings from Recent Palliative Care Provider Surveys

*Gloria Brooks, MPA, Owner/Principal Consultant, G. Brooks & Associates; Andrew Elliott Russell, MD, MPH, Integrated Fellow in Geriatric & Palliative Medicine, University of Michigan*

**Audience:** Certified Home Health, Hospice, Palliative Care

#### **Program Participants will be able to:**

1. 100 % of learners will increase their knowledge of outcomes of MHHA's Palliative Care Survey by passing a post-test with 80% or better.
2. 100 % of learners will increase their knowledge of the outcomes of UM's Palliative Care Provider Survey by passing a post-test with 80% or better.

### Company Culture: The Life Blood of Continuance

*Andi Chapman, RN, CDP, CADDCT, Amara Hospice, Owner, SelectMed Seminars and Consulting*

**Audience:** Certified Home Health, Hospice, Palliative Care, HME/Infusion, Private Duty

#### **Program Participants will be able to:**

1. Discuss being a part of a TEAM.
2. Discuss why "atmosphere" is essential.
3. Understand Culture is Currency.
4. Identify what elements of culture are important to your work staff.
5. Discuss how to handle discipline in a positive way.
6. Discuss the leadership role: Lead so they will want to follow.

3:45 p.m.—4:00 p.m. Break

4:00 p.m.—5:15 p.m. Breakout Sessions

### Transforming Your Agency to Meet the Needs of VBID, ACO, REACH and Other Lucrative Reimbursement Models.

*Jeremy Powell, BA, BS, M.Ed, Founder and CEO, Acclivity Health Solutions*

**Audience:** Hospice, Certified Home Health, Palliative Care

#### **Program Participants will be able to:**

1. Use CMS data at the Point of Care to support the delivery of outcomes (Clinical and Financial) that are aligned with CMS program success (within VBID, ACO and REACH)
2. Discuss how to bring their agency into new networks with advantageous reimbursement offerings
3. Discuss how to support care redesign initiatives within their agencies to support participation in VBID, ACO, REACH.

### Fostering a Culture of Belonging

*Kathy Grinsteiner, MA, Owner, EverGROWTH*

**Audience:** Certified Home Health, Hospice, HME/Infusion, Private Duty, Palliative Care

#### **Program Participants will be able to:**

1. Develop a deeper understanding of what DEIB truly means.
2. Gain knowledge about the neuroscience of social belonging.
3. Identify key biases (beyond implicit and unconscious bias.)
4. Build an awareness of important communication tools that help to create a sense of belonging.

### Licensing for Home Care: A Proposal in Michigan

*Barry Cargill, BS, CAE, President & CEO, Michigan HomeCare & Hospice Association; Sandi Jones, BA, MA, Partner/Lobbyist, Muchmore Harrington Smalley and Associates*

**Audience:** Private Duty, Certified Home Health

#### **Program Participants will be able to:**

1. Review proposals for licensing of home care agencies presented to the Michigan Legislative for consideration of passage during the 2023-24 Legislative session.
2. Identify and discuss the regulatory process for promulgating rules following approved legislation.
3. Discuss the importance of grassroots involvement to support effective public policy.

## Thursday, May 4th Cont.

4:00 p.m.—5:15 p.m. Breakout Sessions

### Deprescribing: What Do I Need to Know?

*Ellen Fulp, PharmD, BCGP, Director of Pharmacy Education AvaCare, Inc.*

**Audience:** Hospice, Palliative Care

#### **Program Participants will be able to:**

1. Review and better understand. Medications appropriateness and deprescribing.
2. Discuss communication models aimed at improving effective deprescribing communication with patients and other clinicians.

### Legislative Update

*John Gallagher, BS, MA, Vice President of Government Relations, VGM Group, Inc.*

**Audience:** HME/Infusion

#### **Program Participants will be able to:**

1. Discuss the current status legislative activity as it relates to the DME Industry.
2. Explain the roles of key members of Congress, particularly those in Michigan, and discuss their importance in passing any laws in the industry.
3. Discuss the need and importance for grassroots activity and illustrate ways to get providers more active.

### Remote Patient Monitoring (RPM): Caring for Your Patients in Real Time

*Greg Cavanaugh, MHA, VP of Business Development, Sciometrix*

**Audience:** Certified Home Health, Hospice, Private Duty, HME/Infusion, Palliative Care

#### **Program Participants will be able to:**

1. Define what is RPM and its benefits.
2. Discuss how the technology works.
3. Discuss how the data is used for Patient/Provider benefits.

### Difficult Conversations

*Jennifer Mansfield, BS, MA, Partner, Chief Outreach Office/Lieutenant, Coeus Creative Group/Redford Township Police Department.*

**Audience:** Certified Home Health, Hospice, Palliative Care, Private Duty, HME/Infusion

#### **Program Participants will be able to:**

1. Explore and understand what makes conversations difficult and why they need to be addressed.
2. Develop a process to prepare for difficult conversations.
3. Identify mature behaviorally intelligent strategies for managing difficult conversations.

## Friday, May 5th

8:00 a.m.—9:00 a.m. Continental Breakfast

9:00 a.m.—10:30 a.m. General Sessions

### Making of a Victim: Sex Trafficking and Grooming

*Jennifer Mansfield, BS, MA, Partner, Chief Outreach Office/Lieutenant, Coeus Creative Group/Redford Township Police Department.*

**Audience:** Certified Home Health, Hospice, Private Duty, HME/Infusion, Palliative Care

#### **Program Participants will be able to:**

1. Discuss what Sex Trafficking is and how it impacts the community.
2. Identify victims and characteristics before and after trafficking.
3. Discuss how to fight sex trafficking.

## Friday, May 5th Continued

10:30 a.m.—10:45 a.m. Break

10:45 a.m.—12:00 p.m. General Sessions

**Using EQ Coupled with IQ and CE to Overcome Home Health Care & Hospice Industry Barriers and Challenges.**

*Cleamon Moorer, Jr, PhD, President/CEO, American Advantage Home Care, Inc.*

**Audience:** Certified Home Health, Hospice, Private Duty, HME/Infusion, Palliative Care

**Program Participants will be able to:**

1. Assess personal EQ factors and identify appropriate methods to better manage situations in various settings.
2. Apply and contrast Geert Hofstede's cultural norms/dimensions to multiple intercultural settings.



# CONFERENCE REGISTRATION

Name: \_\_\_\_\_

Organization: \_\_\_\_\_

Address: \_\_\_\_\_

City: \_\_\_\_\_ State: \_\_\_\_\_ Zip: \_\_\_\_\_

Phone: \_\_\_\_\_ Fax: \_\_\_\_\_ E-mail: \_\_\_\_\_

Title: \_\_\_\_\_ Mobile Number: \_\_\_\_\_

**Check all that apply:**

- MHHA Member OR VGM Member
- My organization is a new member of MHHA (after May 31, 2022).
- This is the first MHHA conference I have attended.
- I am willing to serve as a session moderator or monitor.
- Special Dietary Requirements: \_\_\_\_\_

**Select an attendance option:**

- Full Conference (May 3rd—May 5th):
  - ★ Tuesday Night Welcome Reception
  - ★ Wednesday Continental Breakfast
  - ★ Wednesday Lunch
  - ★ Wednesday Exhibitor Reception (Food & Cash Bar)
  - ★ Thursday Continental Breakfast
  - ★ Thursday Awards Luncheon
  - ★ Friday Continental Breakfast
  - ★ Program Handouts/Material
  - ★ Continuing Education Credits for Nursing and Social Work, Nursing Home Administrators

**Early Bird**  
(Before 3/31/23)
**Regular**  
(3/31/23 & after)

MHHA OR VGM Member (3 Day)	\$425	\$465
Additional MHHA Member (3 Day)	\$395	\$425
Nonmember	\$580	\$610
MHHA OR VGM Member (2 Days)	\$350	\$390
Nonmember (2 Days)	\$490	\$520
MHHA or VGM Member Wed or Thurs Registration	\$195	\$220
Nonmember Wed or Thurs Registration	\$250	\$265
MHHA OR VGM Member Friday Only Registration	\$100	\$125
Nonmember Friday Only Registration	\$195	\$220

Indicate which day(s) attending:

- Wednesday, May 3rd OR  Thursday, May 4th
- Friday, May 5th

**Spouse/guest registration:**

- Spouse/guest registration \$130.00  
(spouse/guest package includes conference scheduled meals and receptions; does not include attendance at educational sessions.)
- Spouse/Guest Name: \_\_\_\_\_

**Please indicate if you need the following CEs: (this is included in your registration fee)**

- Nursing  Social Work
- Nursing Home Administrators

**Create Your Itinerary:  
Wednesday, May 3rd**

**8:30 a.m. – 9:30 a.m.**

- Keynote: The Health System of the Future is in the Home

**9:45 a.m.—11:00 a.m.**

- Hospice Agencies Preparing for Federal Surveys
- HME Audit Climate: What You Need to Know
- OASIS E and Impact on Value Based Purchasing
- Top Homecare Employer Mistakes
- Michigan’s Initiatives to Expand & Elevate the DCW
- Volunteer Recruitment 101

**11:15 a.m. – 12:15p.m.**

- Private Duty Committee
- HME/Infusion Committee
- Hospice/Palliative Care Committee
- Certified Committee

**1:00 p.m. – 2:30 p.m. (Select One)**

- Home Health Agencies Preparing for Federal Survey
- Unlock Performance Value in Care at Home
- Medicare/Medicaid Managed Care: Rights of the DME
- Better Together: Oncology and Hospice Care
- Maximizing Hospice Fundraising Income with a Small Philanthropy Team
- Selling to Hospitals to Become a Preferred Provider
- Top 10 Practices of Volunteer Engagement

## Wednesday, May 3rd Cont.

2:45 p.m. – 4:15 p.m. (Select One)

- Program Integrity Audits—RACs, UPICs & SMRCs
- Simplifying Surrogate Decision Making.
- Employee or Independent Contractor: Avoiding Employee Classification Errors
- Impact of Electronic Visit Verification on Home Health/Personal Care
- Navigating Medicare Advantage Plans
- A Strategic Approach to Disputing Audits
- The Interaction of Volunteer Engagement & Human Resources

## Thursday, May 4th

8:15 a.m. – 9:30 a.m.

- General Session: Cybersecurity for the Healthcare Professional

10:15 a.m. – 11:45 a.m. (Select One)

- Riding the Value-Based Home Health Model to Successful Programming
- Music Therapy: A Physician's Perspective & Other Fun Treatments
- Legal/Regulatory Compliance Issues for Home Care
- Palliative Care Telehealth Best Practices
- Active Shooter Prevention and Response
- Working and Contracting with National Payers

2:15 p.m. – 3:45 p.m. (Select One)

- Medicare Update: TPE, One on One Education, & the Oxygen LCD
- Home Care & Hospice 2023: A Washington Update
- Challenges with Opioids: Managing Adverse Effects and Treating Patients with Substance Use Disorders.
- Auto No Fault Reform: Historical Recap and Current Status
- Artificial Intelligence— The Future of Healthcare is Now
- The State of Palliative Care in Michigan
- Company Culture: The Life Blood of Continuance

4:00 p.m.—5:15 p.m. (Select One)

- Transforming Your Agency to Meet the Needs of VBID, ACO, REACH and other Lucrative Reimbursement Methods
- Fostering a Culture of Belonging
- Licensing for Home Care: A Proposal in Michigan
- Deprescribing What Do I Need to Know?
- Legislative Update
- Remote Patient Monitoring: Caring for Your Patients in Real Time
- Difficult Conversations

## Friday, May 5th

9:00 a.m. – 10:30 a.m.

- Making of a Victim: Sex Trafficking and Grooming

10:45 a.m. – 12:00 p.m.

- Using EQ Coupled with IQ, CE to Overcome Home Health Care & Hospice Industry Barriers and Challenges.

## Sign Up Here for Meal Functions:

The following activities are included in a full conference registration. However, in order to have an accurate meal count and setup, you must indicate your plans to attend these functions. You will receive meal tickets in your registration packet only for activities you have checked on this form.

## Tuesday, May 2nd

- Welcoming Reception & Registration (7:00 pm—8:30 pm)

## Wednesday, May 3rd

- Continental Breakfast & Orientation (7:30 am – 8:30 am)
- Networking Lunch (12:15 pm – 1:00 pm)
- Grand Opening Exhibitor Reception (4:30 pm – 7:00 pm)

## Thursday, May 4th

- Continental Breakfast (7:30 am – 8:15 am)
- Awards Luncheon (12:30 pm – 2:00 pm)

## Friday, May 5th

- Continental Breakfast (8:00 am– 9:00 am)

### Registration Fees:

Registration fee enclosed: \$ \_\_\_\_\_

\*Minus discounts (see bottom): \$ \_\_\_\_\_

Total Enclosed: \$ \_\_\_\_\_

### Payment Method:

- Check Enclosed       Visa       Discover
- American Express       MasterCard

CC#: \_\_\_\_\_

Authorized Signature: \_\_\_\_\_

Exp. Date: \_\_\_\_\_

### Make all checks payable to MHHA and mail to:

**Michigan HomeCare & Hospice Association (MHHA)**  
2140 University Park Drive, Suite 220  
Okemos, Michigan 48864

Registration paid by credit card may be faxed to: 517/349-8090.

On-line registration at: [www.mhha.org](http://www.mhha.org)

\* MHHA offers the following discounts: 10% discount off registration fees for new member (joined MHHA after May 31, 2022) and 10 % discount off registration fees for an individual who has not previously attended a MHHA Annual Conference.

# Michigan Foundation for Home Care Annual Silent Auction

May 3 - 4, 2023  
Michigan HomeCare & Hospice Association  
Annual Conference  
Grand Traverse Resort & Spa  
Acme, Michigan

Proceeds to benefit the Michigan Foundation for Home Care and funding the MHHA Conference scholarships.

Individuals/Organizations: Can you provide packages, gifts, gift certificates, tickets or other auctionable items?

Auction Shoppers: Plan to attend the conference, do some shopping.

**If you can help with a donation, call 517/349-8089 or fax this form to the MHHA Office at 517/349-8090 , E-mail: [cindyt@mhha.org](mailto:cindyt@mhha.org) by April 21, 2023.**

**Donations and slips can also be dropped off at the MHHA Office. All information below must be completed for gift/donation.**

Name: \_\_\_\_\_

Organization: \_\_\_\_\_

Phone: \_\_\_\_\_ Fax: \_\_\_\_\_

E-mail: \_\_\_\_\_

Auctionable Gift/Donation: \_\_\_\_\_

Value: \_\_\_\_\_

**Thank you for your Donation!**

# Thank You to our 2022 MHHA Annual Conference Exhibitors and Sponsors!

We look forward to working with them again in 2023!

